

Making the most of your **2006 Census** Community Profile Series



www.abs.gov.au/census



Making the most of your 2006 Census Community Profile Series

Contents

2006 Census Overview	4
Census Community Profile Series	5
Basic Community Profile	6
Place of Enumeration Profile	8
Indigenous Profile	10
Time Series Profile	12
Expanded Community Profile	14
Working Population Profile	16
Summary of key 2006 Census products	18
2006 Geographic structure	19
How the ABS can help you	20



2006 Census Overview

The Census of Population and Housing is held every five years and is the largest statistical collection undertaken by the Australian Bureau of Statistics (ABS). The Census collects population, housing, social and economic characteristics, which provides a 'snapshot' of Australian society.

Over 30,000 collectors delivered Census forms to approximately nine million households for Census Night, 8 August 2006. In addition to the traditional paper form, Australians (and visitors) also had the option of completing their Census form online for the first time.

Some interesting 2006 Census facts:

- The number of people counted (including overseas visitors) was 20,061,646.
- There were 771,130 respondents who submitted their information via eCensus, this represents 10.15% of all occupied private dwellings.
- There were more females (50.6%) than males (49.4%).
- The number of people who identified as being Indigenous was 455,031.
- The median age of the Australian resident population was 37 years, up from 35 years in the 2001 Census.
- The number of people counted who had Australian Citizenship was 17,095,569 (86.1%).

The wealth of information collected through the Census is a valuable asset for all Australians. Census information is vital to supporting the planning, administration, policy development and evaluation of activities of government, business, researchers and community users.

2006 Census Community Profile Series

The Community Profiles are a series of tables containing key 2006 Census characteristics of persons, families and dwellings.

The Profiles are excellent tools for research, planning and analysis and are a great way of obtaining a statistical picture of a community. The tables are presented in a standard format, which allows you to easily compare different areas or population groups.

There are a number of Profile types available, varying in the amount of data detail or population group. You can choose data profiles for the geographic area of your choice – from Collection District (CD) level to the whole of Australia.

If you require data for a large number of areas, it is recommended that you contact an ABS Information Consultant who can advise you of an appropriate product and any applicable charges.

How you can access the Community Profile Series



Go to the ABS website www.abs.gov.au/census and click on the Community Profiles icon. You will then be taken to a page where you can choose from a number of location search methods, which are:

Search – Enables you to enter a place name or postal area within Australia and returns all areas which match.

Address Search – Allows you to enter a street address and returns all areas the address falls within.

States and Cities – Lists Australia, all states and territories and each capital city.

Browse – Drop down menu enables you to choose from a range of location types and browse through the geographic hierarchy.

Map – Choose your location with a clickable map.

Once you have chosen your location, you will be presented with the option to download the Community Profile of your choice.



An important change for the 2006 Census was the 'Place of Usual Residence' question (where a person usually lives) as the primary basis for releasing data. This has replaced data based on 'Place of Enumeration' (where someone was counted on Census Night) as the primary method of release.

Basic Community Profile

ABS Cat. No. 2001.0



Basic Community Profile (BCP): Is the primary profile consisting of 45 tables of key Census characteristics of persons, families and dwellings based on Place of Usual Residence (where Census respondents usually live).

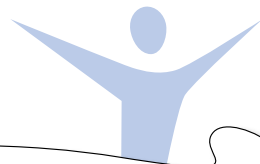
Further data from the 2006 Census provides information about people's ancestry, their use of personal computers at home, and Internet use are also included in the profile.

Geography available: All Australian Standard Geographical Classification (ASGC) areas from Collection Districts (CD) and above (including Remoteness Areas) and the Census Geographic Areas of Commonwealth Electoral Divisions (CED), State Electoral Divisions (SED), State Suburbs (SSC) and Postal Areas (POA).

The Australian Standard Geographical Classification (ASGC) is a hierarchically structured classification used by the ABS for classification of spatial units within Australia. The 2006 Geographic Structure can be found on page 19.

Release dates: The 45 tables of BCP data were issued in two releases:

- First Release: 27 August 2007
- Second Release: 25 October 2007



All Community Profiles are FREE online
www.abs.gov.au/census.

LIST OF TABLES - BASIC COMMUNITY PROFILE

- B01 Selected Person Characteristics by Sex (First Release Processing)
- B02 Selected Medians and Averages
- B03 Place of Usual Residence on Census Night by Age
- B04 Age by Sex
- B05 Registered Marital Status by Age by Sex
- B06 Social Marital Status by Age by Sex
- B07 Indigenous Status by Age by Sex
- B08 Ancestry by Country of Birth of Parents
- B09 Country of Birth of Person by Sex
- B10 Country of Birth of Person by Year of Arrival in Australia
- B11 Proficiency in Spoken English/Language by Year of Arrival in Australia by Sex
- B12 Language Spoken at Home by Sex
- B13 Religious Affiliation by Sex
- B14 Type of Educational Institution Attending (Full/Part-Time Student Status by Age) by Sex
- B15 Highest Year of School Completed by Age by Sex
- B16 Gross Individual Income by Age by Sex
- B17 Core Activity Need for Assistance by Age by Sex
- B18 Voluntary Work for an Organisation or Group by Age by Sex
- B19 Unpaid Domestic Work: Number of Hours by Age by Sex
- B20 Unpaid Assistance to a Person with a Disability by Age by Sex
- B21 Unpaid Child Care by Age by Sex
- B22 Relationship in Household by Age by Sex
- B23 Number of Children Ever Born by Age of Female
- B24 Family Composition
- B25 Family Composition by Sex of Person in Family
- B26 Gross Family Income by Family Composition
- B27 Family Blending
- B28 Gross Household Income by Household Composition
- B29 Number of Motor Vehicles by Dwellings
- B30 Household Composition by Number of Persons Usually Resident
- B31 Dwelling Structure
- B32 Tenure Type and Landlord Type by Dwelling Structure
- B33 Housing Loan Repayment by Dwelling Structure
- B34 Rent by Landlord Type
- B35 Type of Internet Connection by Dwelling Structure
- B36 Selected Person Characteristics by Sex (Second Release Processing)
- B37 Place of Usual Residence 1 Year Ago by Sex
- B38 Place of Usual Residence 5 Years Ago by Sex
- B39 Non-School Qualification: Level of Education by Age by Sex
- B40 Non-School Qualification: Field of Study by Age by Sex
- B41 Labour Force Status by Age by Sex
- B42 Industry of Employment by Age by Sex
- B43 Industry of Employment by Occupation
- B44 Occupation by Age by Sex
- B45 Method of Travel to Work by Sex

Place of Enumeration Profile

ABS Cat. No. 2004.0

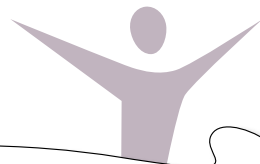


Place of Enumeration Profile (PEP): 43 tables containing key Census characteristics based on where Census respondents were counted on Census Night. This includes people on board vessels in or between Australian ports or on long distance trains, buses or aircrafts. People were counted where they spent Census Night, which may or may not be where they usually live.

Geography available: All Australian Standard Geographical Classification (ASGC) areas from Collection Districts (CD) and above (including Remoteness Areas) and the Census Geographic Areas of Commonwealth Electoral Divisions (CED), State Electoral Divisions (SED), State Suburbs (SSC) and Postal Areas (POA).

Release dates: The 43 tables of Place of Enumeration data were issued in two releases:

- First Release: 25 September 2007
- Second Release: 27 November 2007



QuickStats FREE online
www.abs.gov.au/census.

LIST OF TABLES - PLACE OF ENUMERATION PROFILE

- P01 Selected Person Characteristics by Sex (First Release Processing)
- P02 Selected Medians and Averages
- P03 Place of Usual Residence on Census Night by Age
- P04 Age by Sex
- P05 Registered Marital Status by Age by Sex
- P06 Social Marital Status by Age by Sex
- P07 Indigenous Status by Age by Sex
- P08 Ancestry by Country of Birth of Parents
- P09 Country of Birth of Person by Sex
- P10 Country of Birth of Person by Year of Arrival in Australia
- P11 Proficiency in Spoken English/Language by Year of Arrival in Australia by Sex
- P12 Language Spoken At Home by Sex
- P13 Religious Affiliation by Sex
- P14 Type of Educational Institution Attending (Full/Part-Time Student Status by Age) by Sex
- P15 Highest Year of School Completed by Age by Sex
- P16 Gross Individual Income by Age by Sex
- P17 Core Activity Need for Assistance by Age by Sex
- P18 Voluntary Work for an Organisation or Group by Age by Sex
- P19 Unpaid Domestic Work: Number of Hours by Age by Sex
- P20 Unpaid Assistance to a Person with a Disability by Age by Sex
- P21 Unpaid Child Care by Age by Sex
- P22 Relationship in Household by Age by Sex
- P23 Number of Children Ever Born by Age of Female
- P24 Family Composition
- P25 Family Composition by Sex of Person in Family
- P26 Gross Family Income by Family Composition
- P27 Family Blending
- P28 Gross Household Income by Household Composition
- P29 Number of Motor Vehicles by Dwellings
- P30 Household Composition by Number of Persons Usually Resident
- P31 Dwelling Structure
- P32 Tenure Type and Landlord Type by Dwelling Structure
- P33 Housing Loan Repayment by Dwelling Structure
- P34 Rent by Landlord Type
- P35 Type of Internet Connection by Dwelling Structure
- P36 Selected Person Characteristics by Sex (Second Release Processing)
- P37 Non-School Qualification: Level of Education by Age by Sex
- P38 Non-School Qualification: Field of Study by Age by Sex
- P39 Labour Force Status by Age by Sex
- P40 Industry of Employment by Age by Sex
- P41 Industry of Employment by Occupation
- P42 Occupation by Age by Sex
- P43 Method of Travel to Work by Sex

Indigenous Profile

ABS Cat. No. 2002.0



Indigenous Profile (IP): 34 tables based on Place of Usual Residence containing key Census characteristics of Indigenous persons, households and some comparisons with the non-Indigenous population.

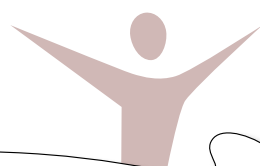
The Census continues to be one of the most important sources of statistical information about Indigenous communities.

Data are based on **Place of Usual Residence**.

Geography available: The Australian Standard Geographical Classification (ASGC) areas of Statistical Local Area (SLA), Statistical Subdivisions (SSD), Statistical Divisions (SD), Local Government Areas (LGA), Remoteness Areas, States and Territories and Australia and the Census Geographic Area of Indigenous Locations (ILOC), Indigenous Areas (IAREA) and Aboriginal and Torres Strait Islander Commission (ATSIC) Regions.

Release dates: The 34 tables of IP data were issued in two releases:

- First Release: 27 August 2007
- Second Release: 25 October 2007



SEIFA 2006 FREE online
www.abs.gov.au/census.

LIST OF TABLES - INDIGENOUS PROFILE

I01	Selected Person Characteristics by Indigenous Status by Sex (First Release Processing)
I02	Indigenous Status by Sex
I03	Age by Indigenous Status by Sex
I04	Selected Medians and Averages by Indigenous Status
I05	Place of Usual Residence on Census Night by Indigenous Status by Sex
I06	Language Spoken at Home by Proficiency in Spoken English/Language
I07	Religious Affiliation by Indigenous Status by Sex
I08	Social Marital Status by Age by Sex for Indigenous Persons
I09	Number of Children Ever Born by Age of Female by Indigenous Status
I10	Type of Educational Institution Attending (Full/Part-Time Student Status by Age) by Indigenous Status by Sex
I11	Highest Year of School Completed by Indigenous Status by Sex
I12	Gross Individual Income by Age by Sex for Indigenous Persons
I13	Core Activity Need for Assistance by Age by Sex for Indigenous Persons
I14	Voluntary Work for an Organisation or Group by Age by Sex for Indigenous Persons
I15	Unpaid Domestic Work: Number of Hours by Age by Sex for Indigenous Persons
I16	Unpaid Assistance to a Person with a Disability by Age by Sex for Indigenous Persons
I17	Unpaid Child Care by Age by Sex for Indigenous Persons
I18	Tenure Type and Landlord Type by Dwelling Structure by Indigenous Status of Household
I19	Rent by Landlord Type by Indigenous Status of Household
I20	Number of Persons Usually Resident by Number of Bedrooms by Indigenous Status of Household
I21	Number of Persons Usually Resident by Type of Internet Connection by Indigenous Status of Household
I22	Number of Persons Usually Resident by Household Composition and Family Composition by Indigenous Status of Household
I23	Gross Household Income by Rent by Landlord Type for Households with Indigenous Persons
I24	Gross Household Income by Rent by Landlord Type for Households without Indigenous Persons
I25	Gross Household Income by Indigenous Status of Household
I26	Housing Loan Repayment by Number of Persons Usually Resident by Indigenous Status of Household
I27	Selected Person Characteristics by Indigenous Status by Sex (Second Release Processing)
I28	Non-School Qualification: Level of Education by Indigenous Status by Age by Sex
I29	Non-School Qualification: Field of Study by Indigenous Status by Sex
I30	Labour Force Status by Age by Sex for Indigenous Persons
I31	Government/Non-Government Employer Indicator by Hours Worked by Sex for Indigenous Persons
I32	Industry of Employment by Indigenous Status by Sex
I33	Occupation by Indigenous Status by Sex
I34	Method of Travel To Work by Indigenous Status by Sex

Time Series Profile

ABS Cat. No. 2003.0



Time Series Profile (TSP): 26 tables containing key Census characteristics of person, families and dwellings comparing data from the 1996, 2001 and 2006 Censuses based on **Place of Enumeration**.

The Time Series Profile (TSP) provides the information to conduct analysis and compare statistics across a number of years.

Some classifications have been redefined to ensure data comparability between Censuses. **Footnotes have been added to the tables to indicate these concordances.**

Geography available: The Australian Standard Geographical Classification (ASGC) areas of Statistical Local Areas (SLA), Statistical Subdivisions (SSD), Statistical Divisions (SD), Local Government Areas (LGA), Statistical Districts, States and Territories and Australia.

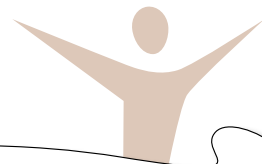
The data is based on **2006 Census boundaries**.

Release dates: The 26 tables of TSP data were issued in two releases:

- First Release: 25 August 2007
- Second Release: 27 November 2007

LIST OF TABLES - TIME SERIES PROFILE

T01	Selected Person Characteristics (First Release Processing)
T02	Selected Averages and Medians
T03	Age by Sex
T04	Registered Marital Status by Age by Sex
T05	Social Marital Status by Age by Sex
T06	Indigenous Status by Age by Sex
T07	Number of Children Ever Born by Age of Female
T08	Country of Birth of Person by Sex
T09	Ancestry by Country of Birth of Parents
T10	Language Spoken at Home by Sex
T11	Proficiency in Spoken English/Language by Age
T12	Religious Affiliation by Age
T13	Type of Educational Institution Attending (Full/Part-Time Student Status by Age) by Sex
T14	Dwelling Structure by Household Composition and Family Composition
T15	Dwelling Structure by Number of Persons Usually Resident
T16	Tenure Type and Landlord Type by Dwelling Structure
T17	Rent by Landlord Type
T18	Gross Household Income by Rent
T19	Family Composition by Housing Loan Repayment
T20	Selected Person Characteristics (Second Release Processing)
T21	Family Composition and Labour Force Status of Parent(s)/Partners by Gross Family Income
T22	Non-School Qualification: Level of Education by Age by Sex
T23	Non-School Qualification: Field of Study by Age by Sex
T24	Labour Force Status by Age by Sex
T25	Industry of Employment by Sex
T26	Occupation by Sex



Census Tables FREE online
www.abs.gov.au/census.

Expanded Community Profile

ABS Cat. No. 2005.0

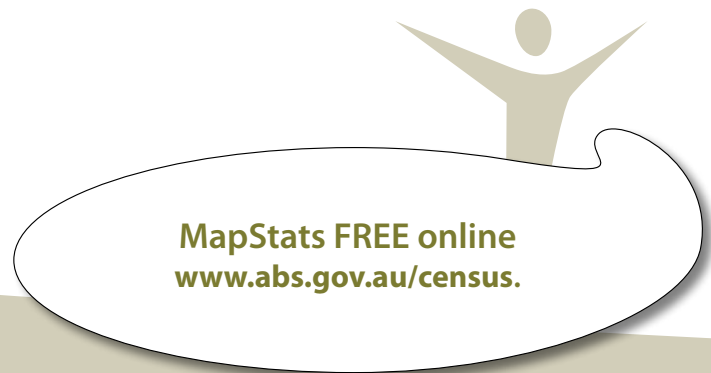


Expanded Community Profile (XCP): The most comprehensive profile in the series with 42 tables based on **Place of Enumeration**. Tables include all the tables from the Basic Community Profiles plus; relationships within a family; living costs and dwelling structures. It builds upon the content of the Basic Community Profile, providing more categories within a classification.

Geography available: The Australian Standard Geographical Classification (ASGC) areas of Statistical Local Areas (SLA), Statistical Subdivisions (SSD), Statistical Divisions (SD), Local Government Areas (LGA), Statistical Districts, States and Territories and Australia.

Release dates: The 42 tables of XCP data were issued in two releases:

- First Release: 25 September 2007
- Second Release: 27 November 2007



MapStats FREE online
www.abs.gov.au/census.

LIST OF TABLES - EXPANDED COMMUNITY PROFILE

- X01 Country of Birth of Person by Age by Sex
- X02 Country of Birth (Region) of Person by Age by Sex
- X03 Country of Birth (Region) of Person by Year of Arrival in Australia
- X04 Proficiency in Spoken English/Language by Year of Arrival in Australia by Age
- X05 Language Spoken at Home by Proficiency in Spoken English/Language by Sex
- X06 Ancestry by Country of Birth of Parents by Sex
- X07 Ancestry of Dependent Children by Age by Country of Birth of Parents
- X08 Religious Affiliation by Age by Sex
- X09 Gross Family Income by Number of Dependant Children for Couple Families
- X10 Gross Family Income by Number of Dependant Children for One Parent Families
- X11 Gross Family Income by Tenure Type by Family Composition
- X12 Gross Family Income by Landlord Type by Family Composition
- X13 Housing Loan Repayment by Family Composition
- X14 Gross Household Income by Tenure Type for Family Households
- X15 Gross Household Income by Tenure Type for Lone Person Households
- X16 Gross Household Income by Tenure Type for Group Households
- X17 Gross Household Income by Landlord Type for Family Households
- X18 Gross Household Income by Landlord Type for Lone Person Households
- X19 Gross Household Income by Landlord Type for Group Households
- X20 Gross Household Income by Rent for Family Households
- X21 Gross Household Income by Rent for Lone Person Households
- X22 Gross Household Income by Rent for Group Households
- X23 Rent by Dwelling Structure
- X24 Housing Loan Repayment by Dwelling Structure
- X25 Dwelling Structure by Household Composition and Family Composition
- X26 Dwelling Structure and Number of Motor Vehicles by Number of Persons Usually Resident for Family Households
- X27 Dwelling Structure and Number of Motor Vehicles for Lone Person Households
- X28 Dwelling Structure and Number of Motor Vehicles by Number of Persons Usually Resident for Group Households
- X29 Dwelling Structure and Number of Bedrooms by Number of Persons Usually Resident for Family Households
- X30 Dwelling Structure and Number of Bedrooms for Lone Person Households
- X31 Dwelling Structure and Number of Bedrooms by Number of Persons Usually Resident for Group Households
- X32 Age of Dependent Children by Family Composition and Country of Birth of Parents
- X33 Age of Dependent Children by Labour Force Status by Sex of Parents for Couple Families
- X34 Age of Dependent Children by Labour Force Status by Sex of Parent for One Parent Families
- X35 Non-School Qualification: Field of Study by Occupation by Sex
- X36 Non-School Qualification: Level of Education by Occupation by Sex
- X37 Non-School Qualification: Level of Education by Industry of Employment by Sex
- X38 Industry of Employment by Hours Worked by Sex
- X39 Occupation by Hours Worked by Sex
- X40 Gross Family Income by Labour Force Status of Partners for Couple Families with no Children
- X41 Gross Family Income by Labour Force Status of Parents/Partners for Couple Families with Children
- X42 Gross Family Income by Labour Force Status of Parent for One Parent Families

Working Population Profile

ABS Cat. No. 2006.0



Working Population Profile (WPP): 22 tables of key Census characteristics of working population data. It provides a range of data, including how many people work full-time or part-time, what incomes they have, which industries they work in, which industries have people working long hours, which occupations utilise the Internet, and how people travel to work.

Data are based on a **person's area of employment**.

Geography available: The Australian Standard Geographical Classification (ASGC) areas of Statistical Local Areas (SLA), Statistical Subdivisions (SSD), Statistical Divisions (SD), Local Government Areas (LGA), States and Territories and Australia and Place of Work Statistical Local Areas.

Release date: 29 February 2008

LIST OF TABLES - WORKING POPULATION PROFILE

W01	Labour Force Status by Age by Sex
W02	Employment Type by Age by Sex
W03	Employment Type by Hours Worked by Age
W04	Employment Type by Labour Force Status by Age by Sex
W05	Employment Type by Country of Birth of Person by Sex
W06	Employment Type by Individual Income by Sex
W07	Industry of Employment by Year of Arrival in Australia
W08	Industry of Employment by Year of Arrival in Australia by Proficiency in English
W09	Industry of Employment by Sex
W10	Industry of Employment by Owner Managers by Number of Employees
W11	Industry of Employment by Hours Worked by Sex
W12	Industry of Employment by Occupation
W13	Occupation by Sex
W14	Occupation of Owner Managers by Number of Employees
W15	Occupation by Individual Income by Government/Non-Government Employee Indicator
W16	Occupation by Individual Income by Age
W17	Occupation by Individual Income by Hours Worked
W18	Occupation by Individual Income by Non-School Qualification: Level of Education
W19	Occupation by Individual Income for Students Aged 15-24 Years
W20	Method of Travel to Work by Occupation
W21	Method of Travel to Work by Age by Sex
W22	Labour Force Status by Type of Educational Institution Attending (Full/Part-Time Student Status) by Age



Download ABS statistics FREE
from the ABS website at
www.abs.gov.au/census.

Summary of Key 2006 Census Products

Free online products – www.abs.gov.au/census

QuickStats: A summary of key Census data for a chosen area, benchmarked against Australia.

MapStats: A series of thematic maps showing the distribution of Census data for a chosen location.

Census Tables: Individual tables of Census data, available on a range of topics, for a chosen location.

CDATA Online: Allows users to construct their own tables via an interactive web interface, with web mapping and charting application software, from the Collection District level to an entire State or Territory and all of Australia.

SEIFA 2006: The Socio-Economic Indexes for Areas 2006 (SEIFA 2006) allows ranking of regions/areas, providing a method of determining the level of social and economic well-being in that region.

Priced products – call 1300 135 070

Census DataPacks: A CD-ROM product containing Census Community Profile data from a single Collection District to an entire State/Territory and all of Australia

TableBuilder: Allows users to construct their own tables via an interactive web interface, using a database containing the 2006 Census Unit Record File.

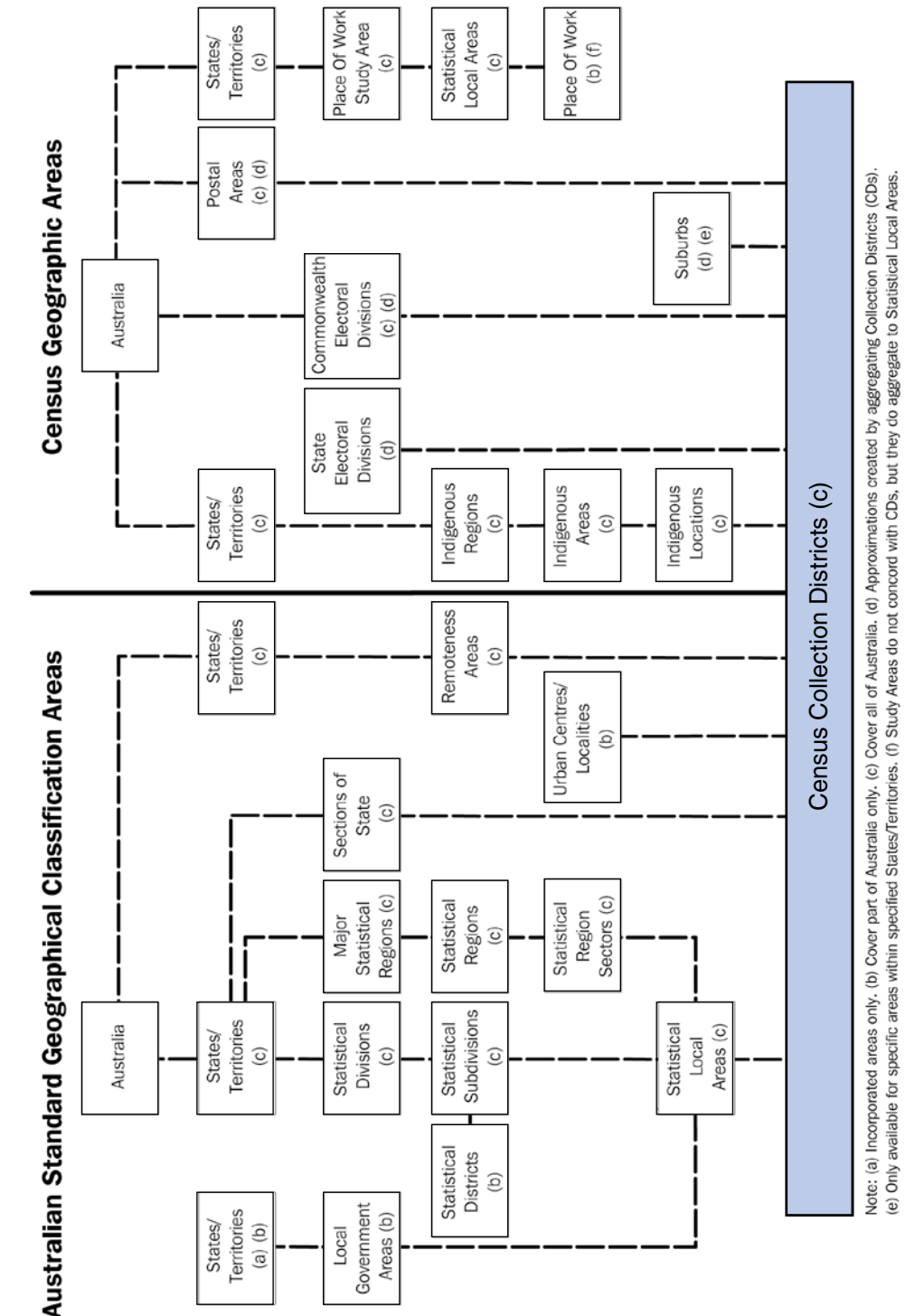
Census Sample File: A confidentialised unit record file of Census variables, which can be used for regression analysis and data modelling.

Social Atlas Series: Presents Census data visually using thematic maps and commentary.

Picture of the Nation: The Australian Statistician's Report: Provides a comprehensive overview of the 2006 Census.



2006 Geographic Structure



Download statistics

free from the ABS website

visit our website www.abs.gov.au

phone 1300 135 070

How the ABS can help you ...

ABS Information Consultancy Service – customised data tailored to meet your needs

In addition to the wealth of statistics available free on the ABS website, the ABS also offers a customised Information Consultancy Service, where experienced consultants provide you with the advice, assistance and data suited to your needs.

Whether you are developing policy for government, operating a business or conducting research, we have information to help you make better-informed decisions.

Contact our experienced information consultants who will discuss your data needs and provide you with an obligation free quote.

Phone 1300 135 070

Email client.services@abs.gov.au

Fax 1300 135 211

www.abs.gov.au/census